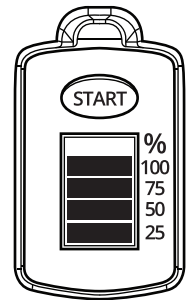


# FILTER REPLACEMENT INDICATOR

Your GENTOO LITE filter replacement indicator will prompt you when you need to change the GENTOO cartridge. The indicator is in the lid of your GENTOO LITE water filter jug.

Ecobud recommends to replace your GENTOO filter at least every 3 months or 600 Litres (whichever comes first) to ensure optimum filtration performance.

1. After activating the GENTOO filter, press "START" button for approximately 5 to 10 seconds until all four bars appear in the display.
2. The percentage in each bar of the display indicates the remaining capacity of your GENTOO filter.
3. A bar will disappear every 3 weeks.
4. If all the bars have disappeared in the display, you should now replace the GENTOO filter. After replacing your filter, reset your indicator by following the steps above.




## NOTES

- ★ Only use genuine GENTOO filters in Gentoo Lite Water Filter Jug
- ! Do not use where water is microbiologically unsafe or of unknown quality
- ★ ecobud® does not warrant individual results as they may vary depending on water quality source



For more information about our products & services, please contact our customer care team

 1300 886 373

 [www.ecobud.com.au](http://www.ecobud.com.au)

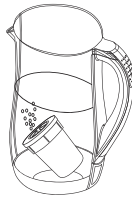
## BEFORE USE - FILTER PREPARATION



1

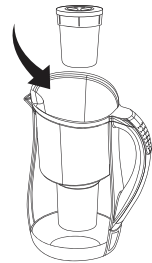
Remove filter & reservoir from jug.

15 mins 



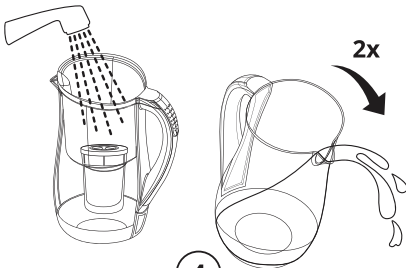
2

Place filter in main body of jug, fill with enough water to cover and soak for 15 minutes.



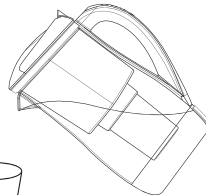
3

Rinse filter under tap, return filter and reservoir to jug.



4

Fill jug reservoir with water, allow for water to completely filter. Repeat this process 2-3 times.



5

Filter preparation complete. You are now ready to enjoy Gentoo life water.